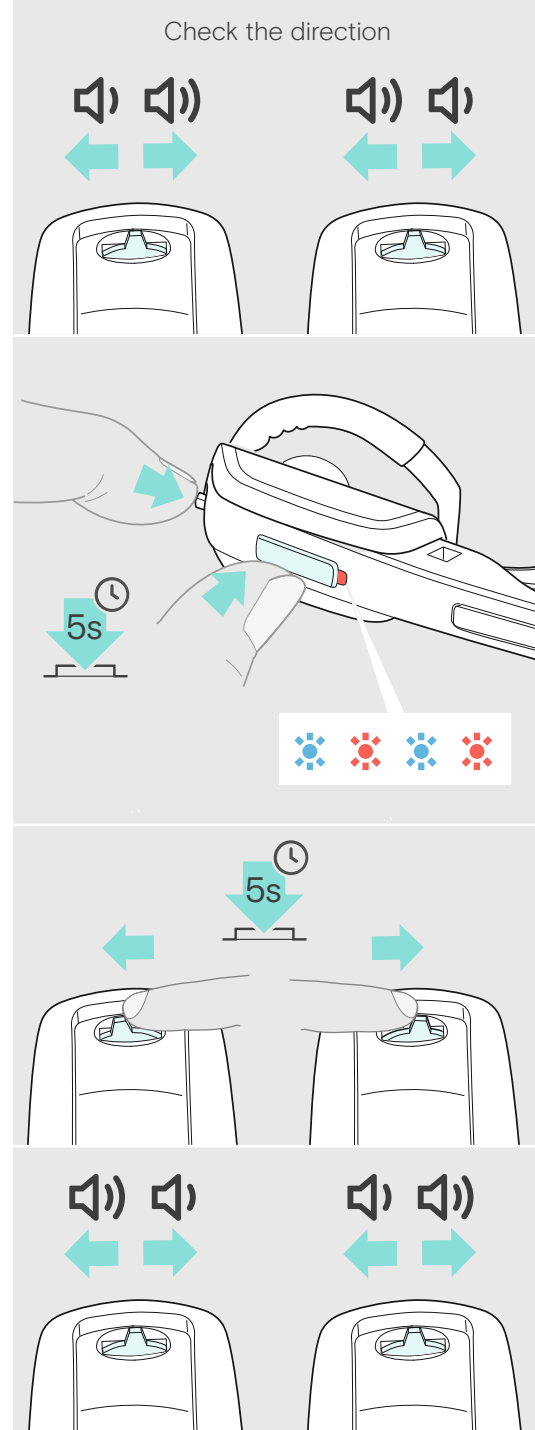
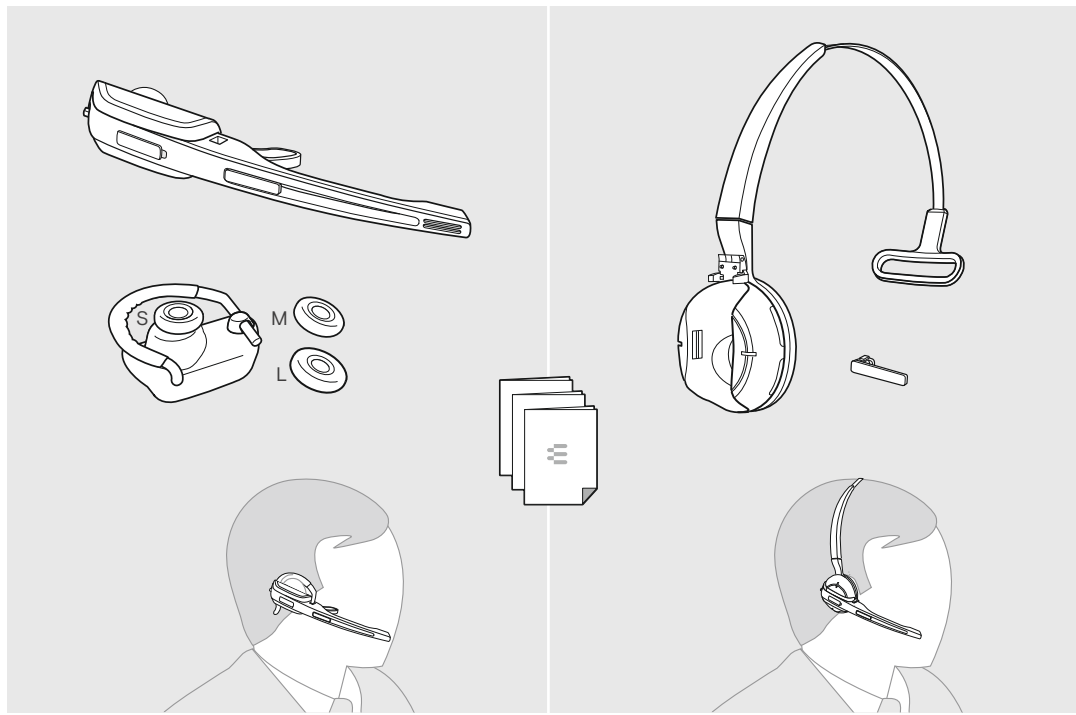


IMPACT SD Series

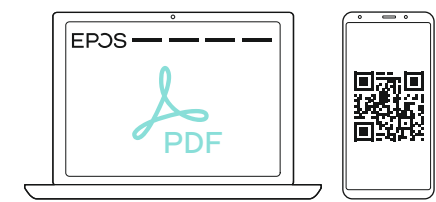
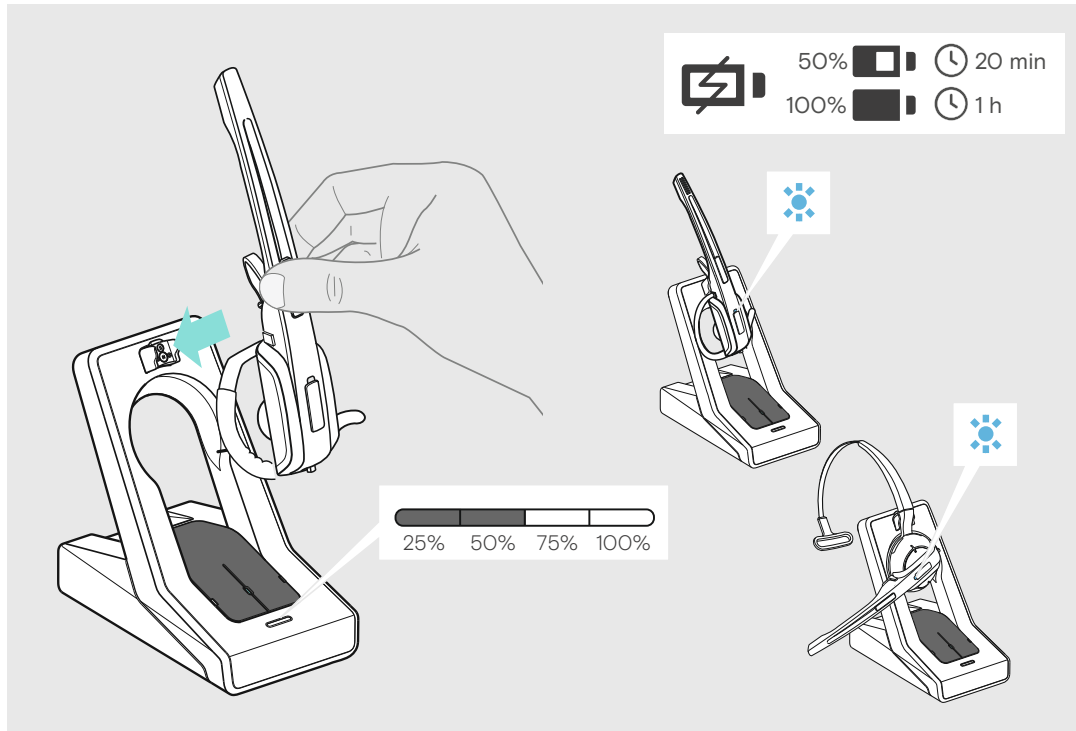
IMPACT SD Office ML headset

EN Quick Guide ES Guía rápida
FR Guide express PT Guia Rápido

Model: SD 10 HS



Charging the headset | Charger le micro-casque | Carga del auricular | Carregar o headset



eposaudio.com/support

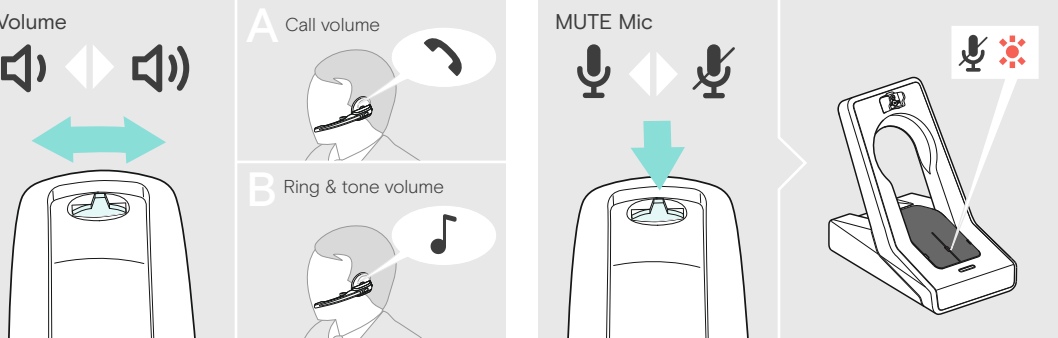
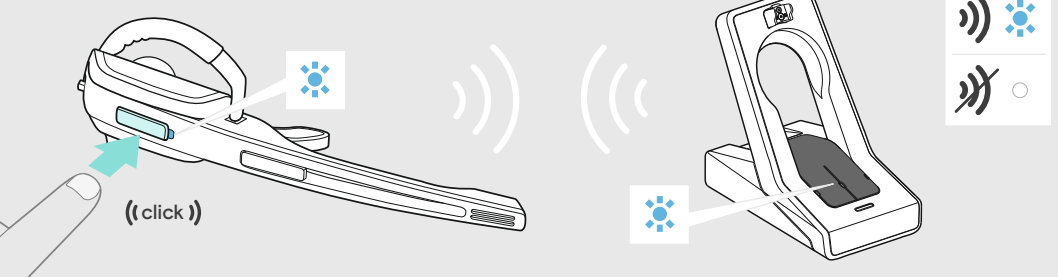
DSEA A/S

Kongebakken 9, DK-2765 Smørum, Denmark
eposaudio.com

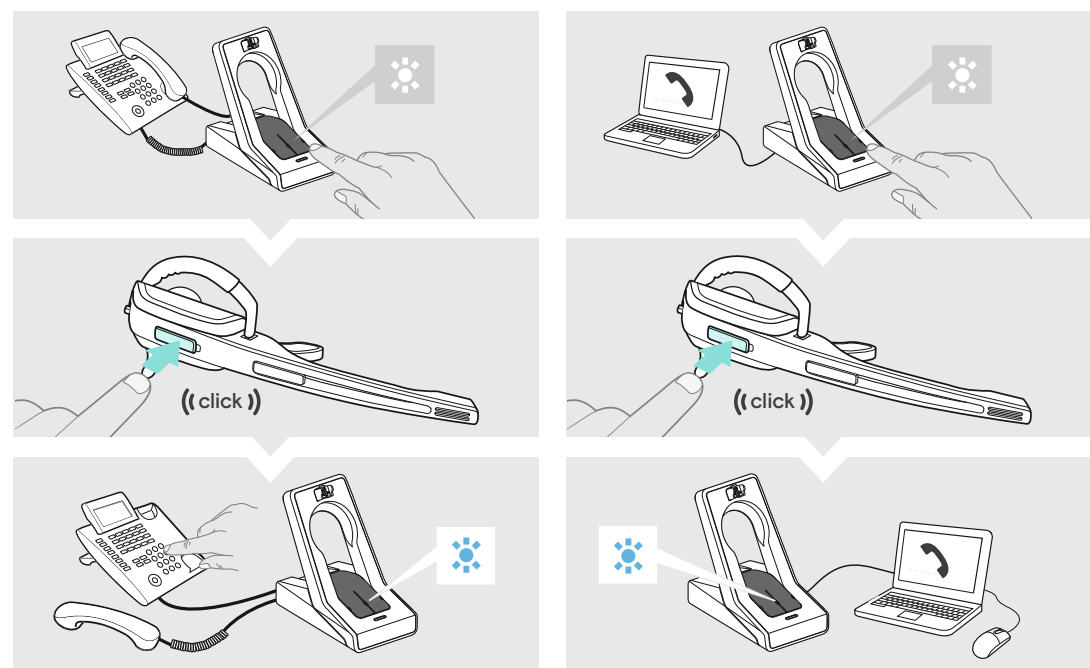
Printed in China, Publ. 12/22, 770-00074/A11

Using the headset | Utiliser le micro-casque | Usar el auricular | Usar os auscultadores

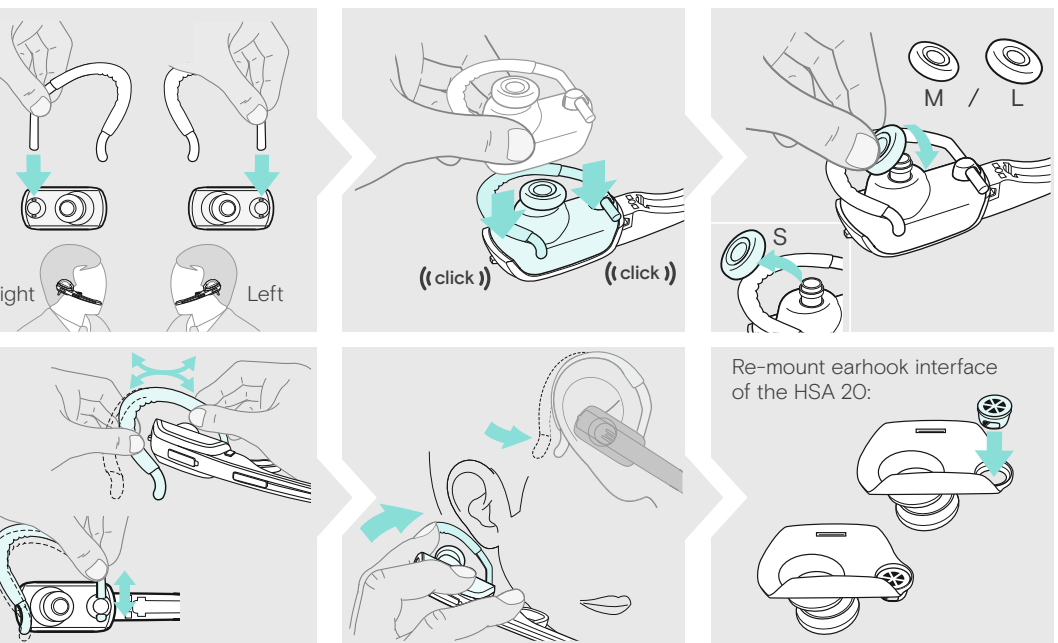
Connecting the headset and the base station



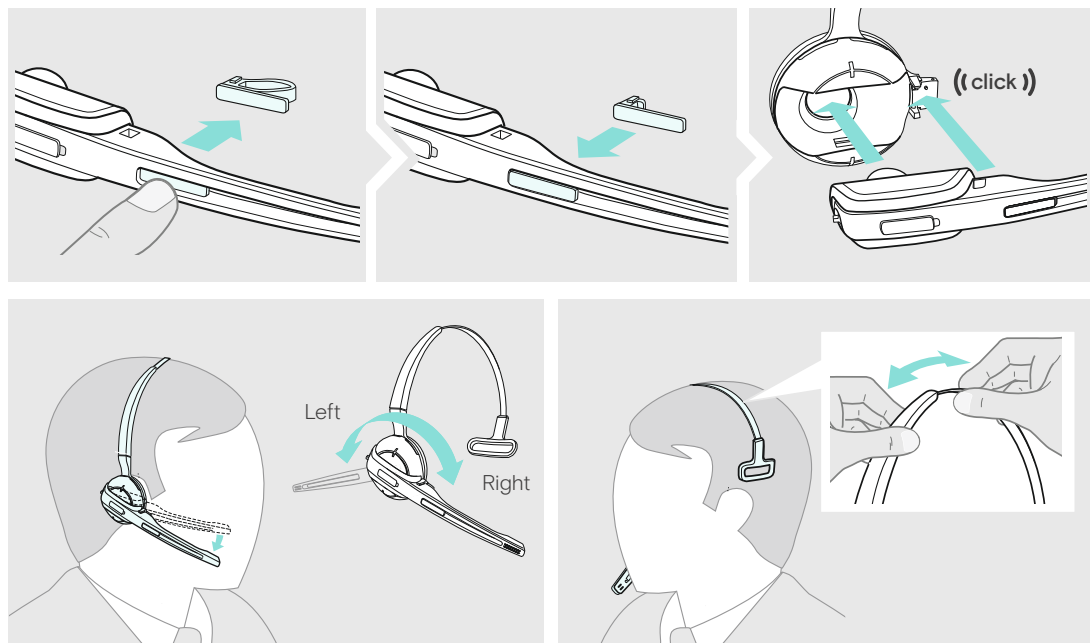
Making calls via the headset | Téléphoner avec le micro-casque | Hacer llamadas con los auriculares | Fazer uma chamada telefonica através do fone de ouvido

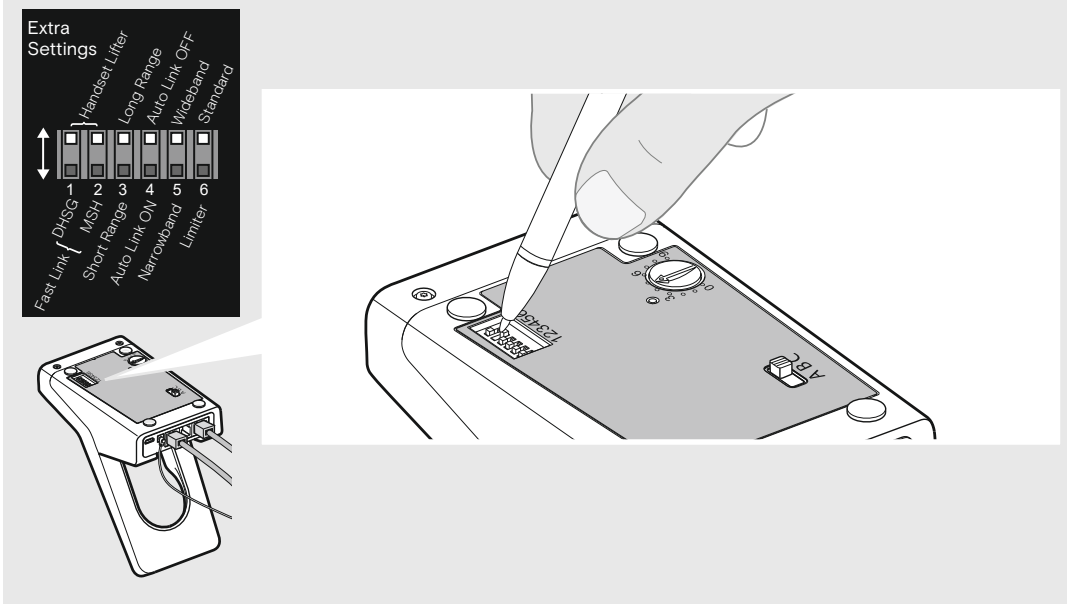


Wearing the headset with the earhook | Porter le micro-casque avec le contour d'oreille | Cómo llevar el auricular con el gancho | Usar o headset com o gancho de ouvido



Wearing the headset with the headband | Porter le micro-casque avec le serre-tête | Cómo llevar el auricular con la diadema | Usar o headset com a fita de cabeça

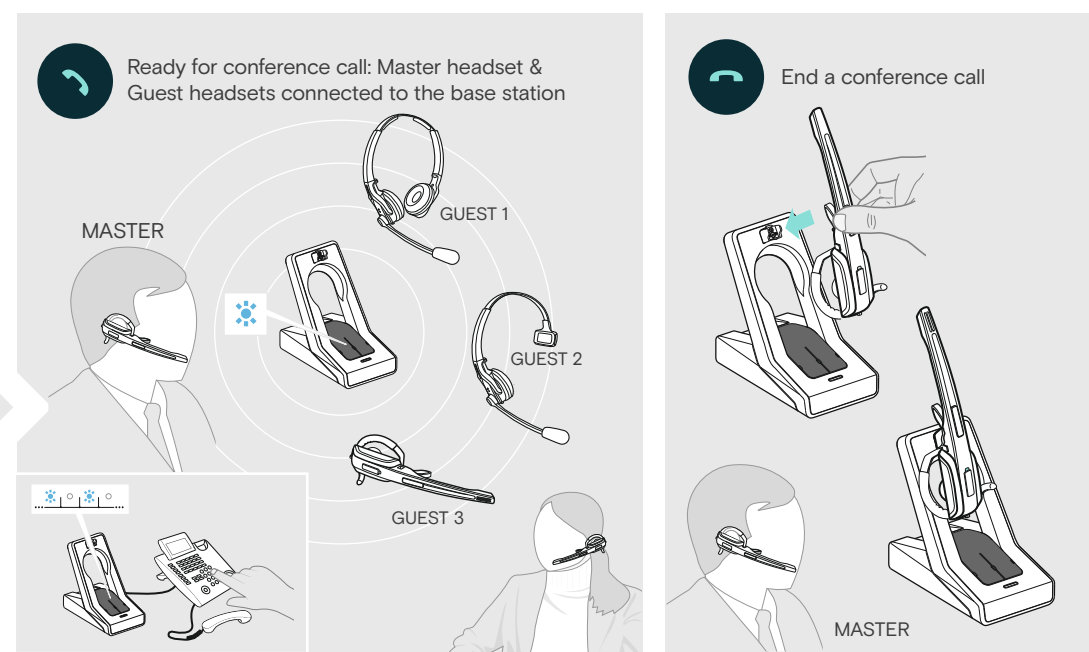
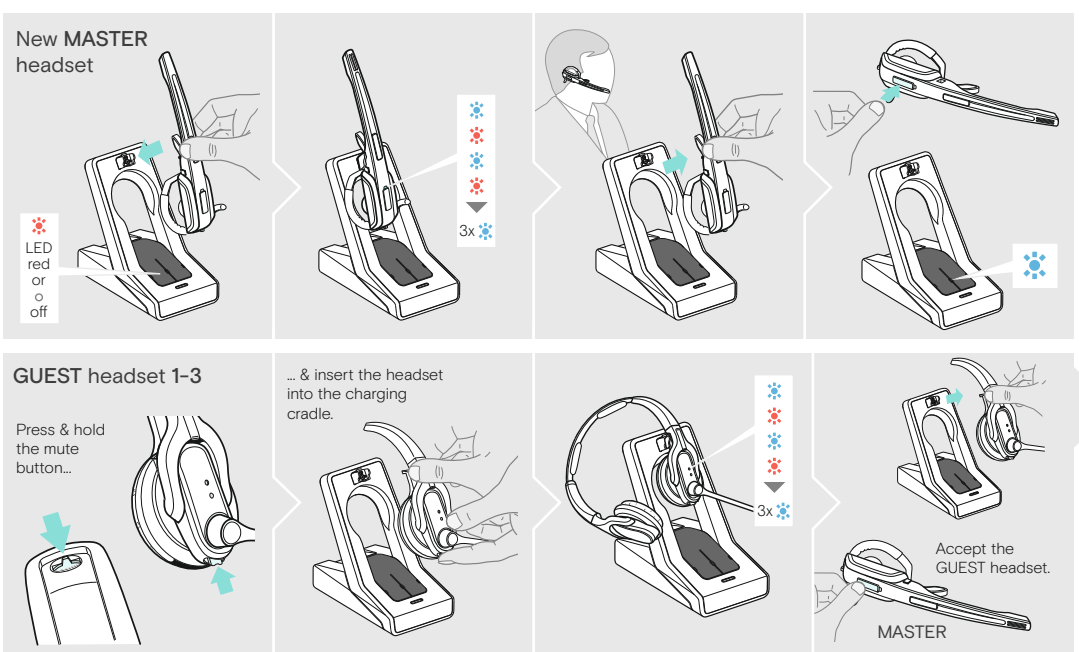




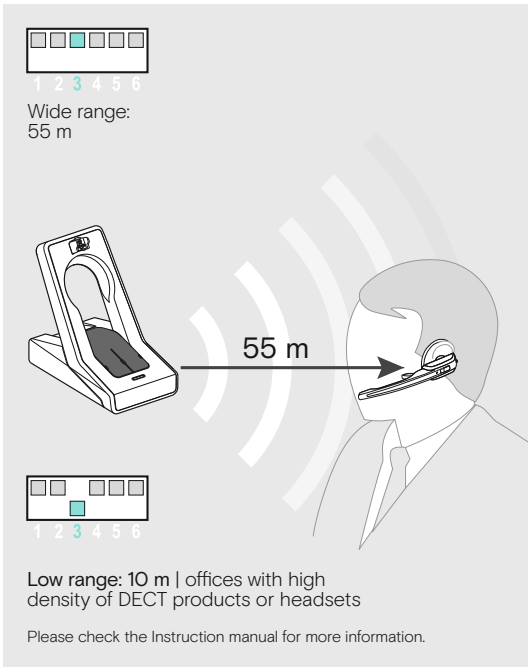
- Extra Settings**
- Fast Link
 - DHSG
 - MSH
 - Short Range
 - Auto Link ON
 - Narrowband
 - Limiter
 - Handset Lifter
 - Long Range
 - Auto Link OFF
 - Wideband
 - Standard

- Manual operation**
Lifts/hangs up the handset manually or using the handset lifter (HSL 10 II).
- Electronic hook switch (DHSG standard)**
Call control via the headset system. For faster link establishment, see Fast Link.
- Electronic hook switch (MSH standard)**
Call control via the headset system.
- Fast Link for DHSG standard & HSL 10 II handset lifter**
Recommended for frequent callers. Fast link establishment without delay due to hidden link to the base station.
- Standard radio range**
- Reduced radio range**
Use this setting in order to avoid interference with other DECT systems. Range of approx. 10 m indoors
- Manual link establishment**
When taking the headset out of the base station, you have to manually establish the wireless link between headset & base station.
- Automatic link establishment – Auto Link**
When taking the headset out of the base station, a wireless link is automatically established between headset and base station.
- Wideband audio transmission**
Automatic frequency adjustment of wideband & narrowband calls. Wideband audio transmission is e.g. supported by Skype & gives high speech quality. Battery life: 8 hours
- Narrowband audio transmission**
Battery life: 12 hours
- Standard limitation**
- Limited volume (country specific)**
EU and US version: in compliance with Directive 2003/10/EC
AU version: in compliance with Directive AS/ACIF G616:2006

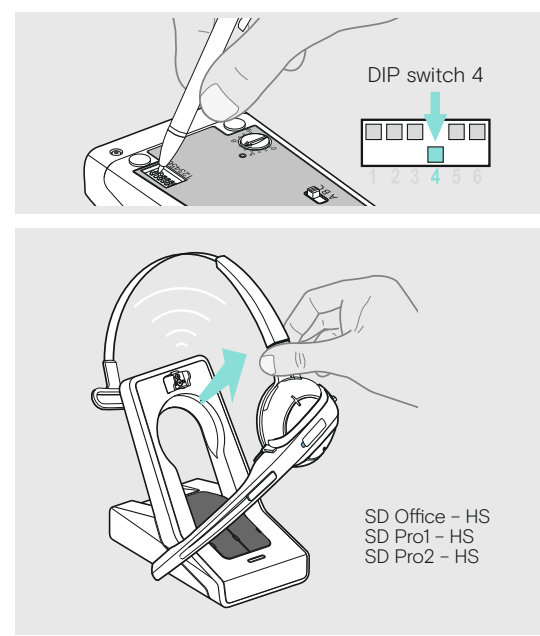
Holding a conference call: Connecting the master headset & the guest headsets with a base station |
 Tenir une conférence téléphonique : Connecter le micro-casque maître et l'oreillette invitée à la station de base |
 Realizar una conferencia telefónica: Conexión del headset maestro y de los headsets invitados con la estación base |
 Realizar uma chamada em conferência: Ligar o micro-auscultador mestre e os micro-auscultadores secundários à base



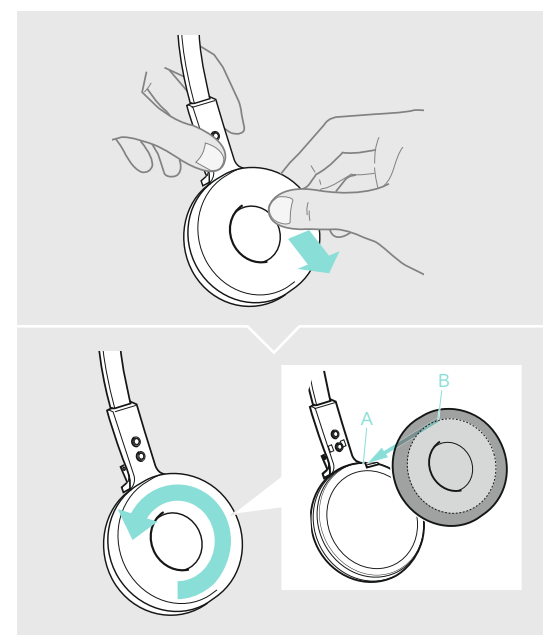
Leaving the DECT range | Quitter le rayon de portée DECT | Salida del alcance DECT |
 Abandonar o alcance DECT



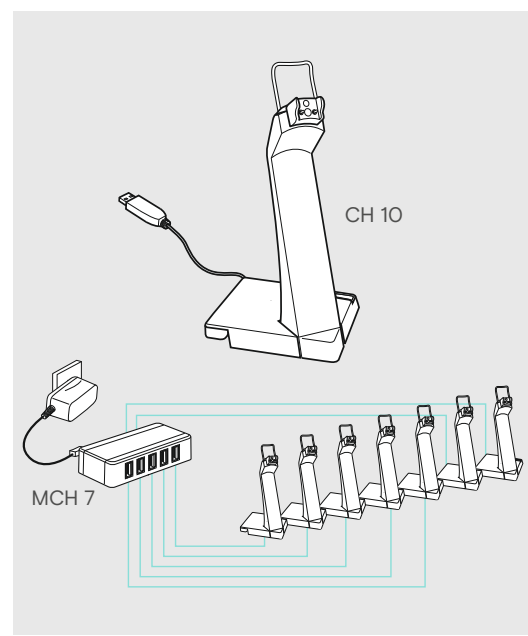
Automatic link establishment |
 Établissement de liaison automatique |
 Establecimiento de conexión automática |
 Estabelecimento de ligação automática



Replacing the ear pad |
 Remplacer l'oreillette |
 Sustitución de la almohadilla |
 Substituir a almofada do auscultador



Charging several headsets simultaneously |
 Charger plusieurs micro-casques |
 Carga de varios auriculares |
 Carregar vários headsets



Detailed information | Informations détaillées |
 Información detallada | Informação detalhada

For easy setup, configuration and softphone call control settings download EPOS Connect on eposaudio.com/connect

For Compatibility guide go to eposaudio.com/compatibility

For Instruction manual go to eposaudio.com/support