

EPOS

ADAPT 500 Series

Battery Removal Guide



DSEA A/S

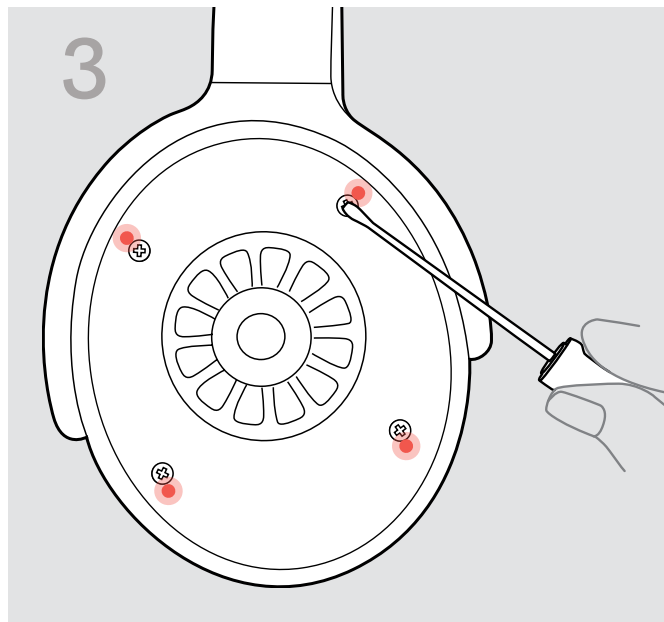
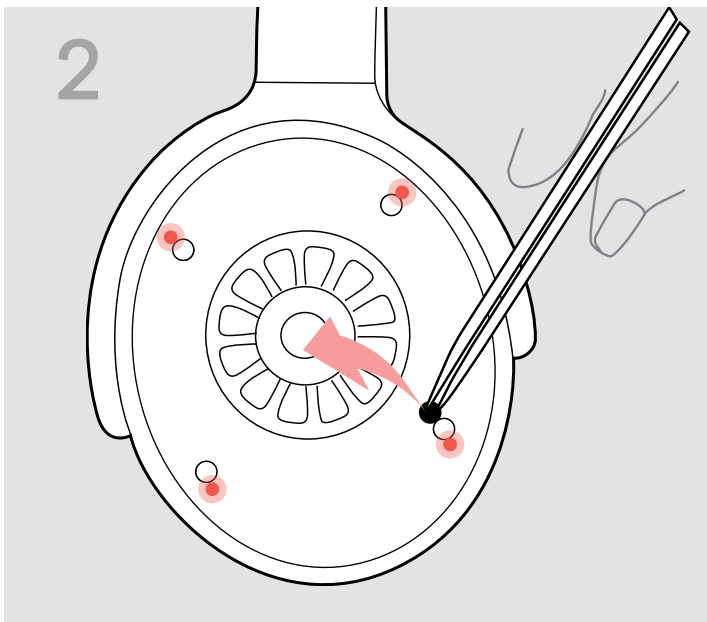
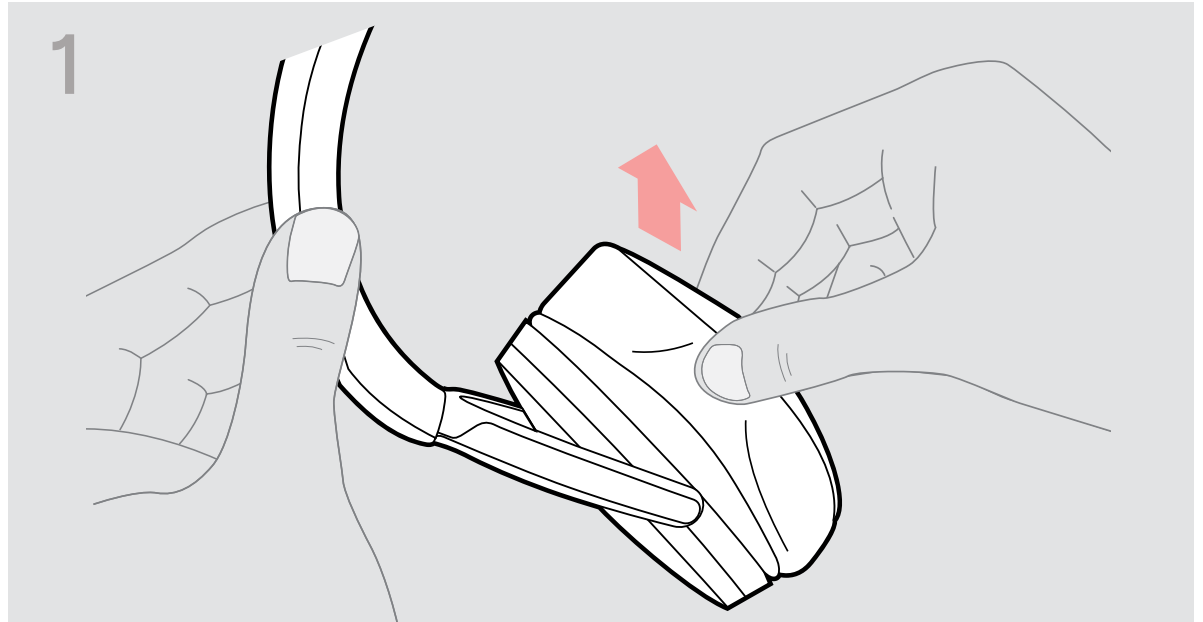
Kongebakken 9, DK-2765 Smørum, Denmark

www.eposaudio.com

Publ. 04/22, A01

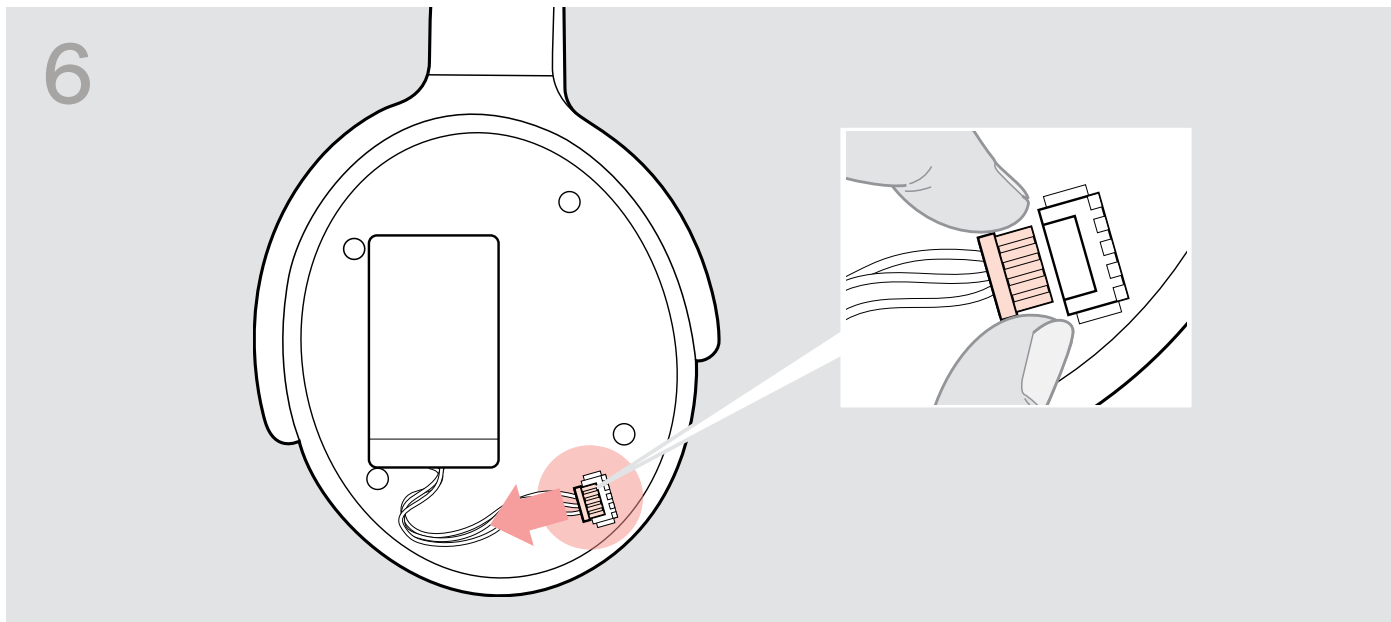
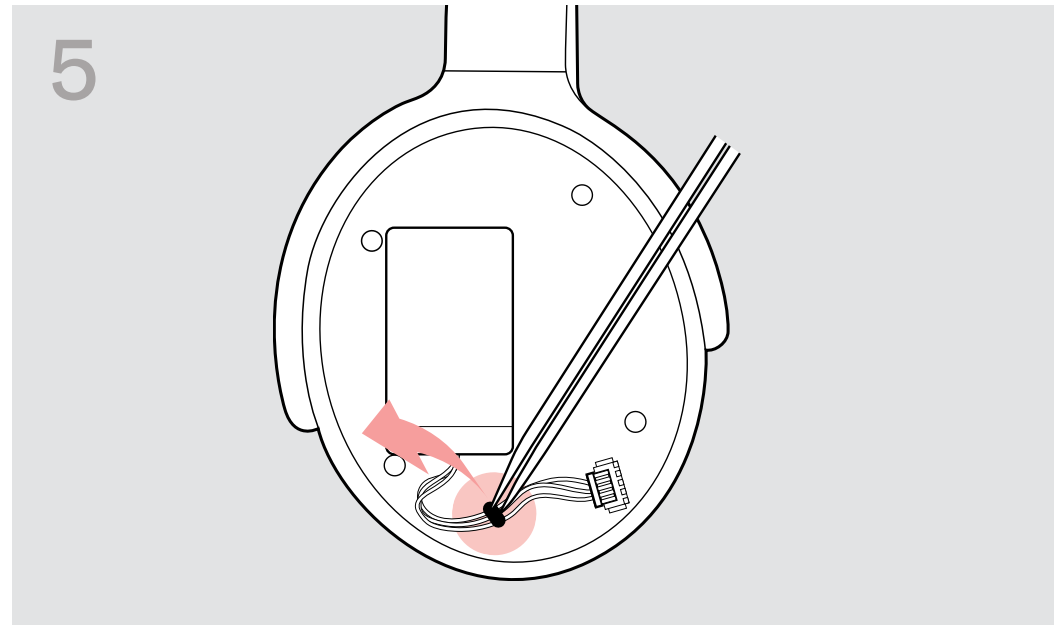
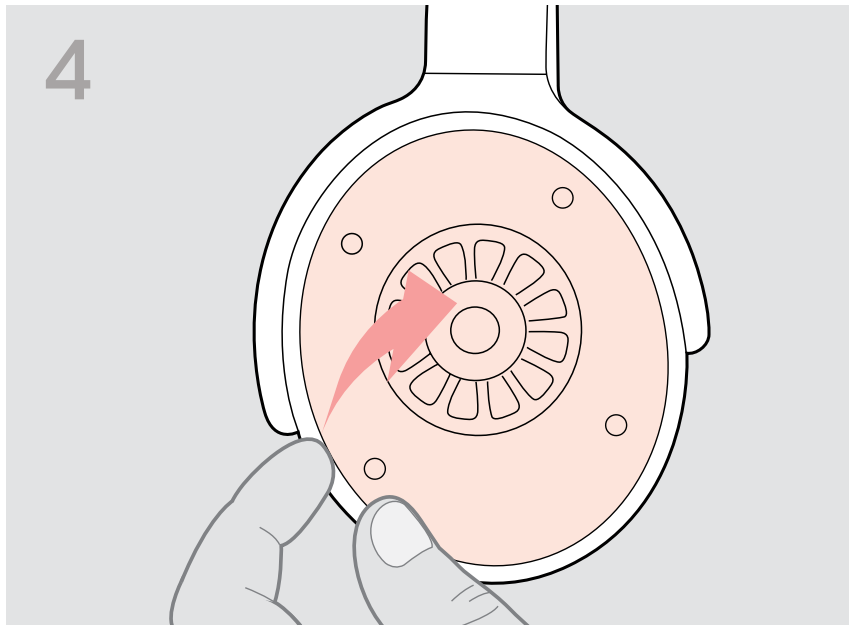
THE POWER OF AUDIO

Battery Removal Guide



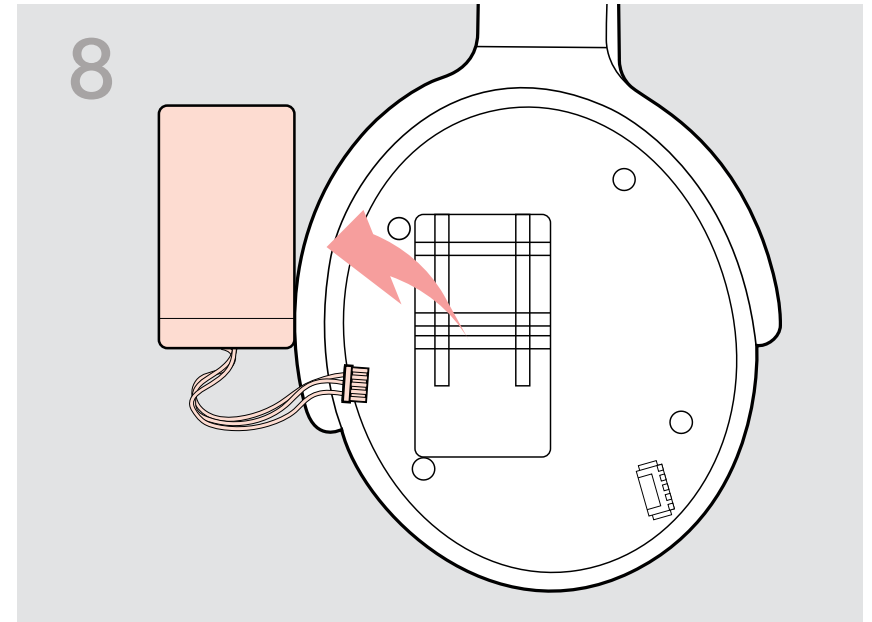
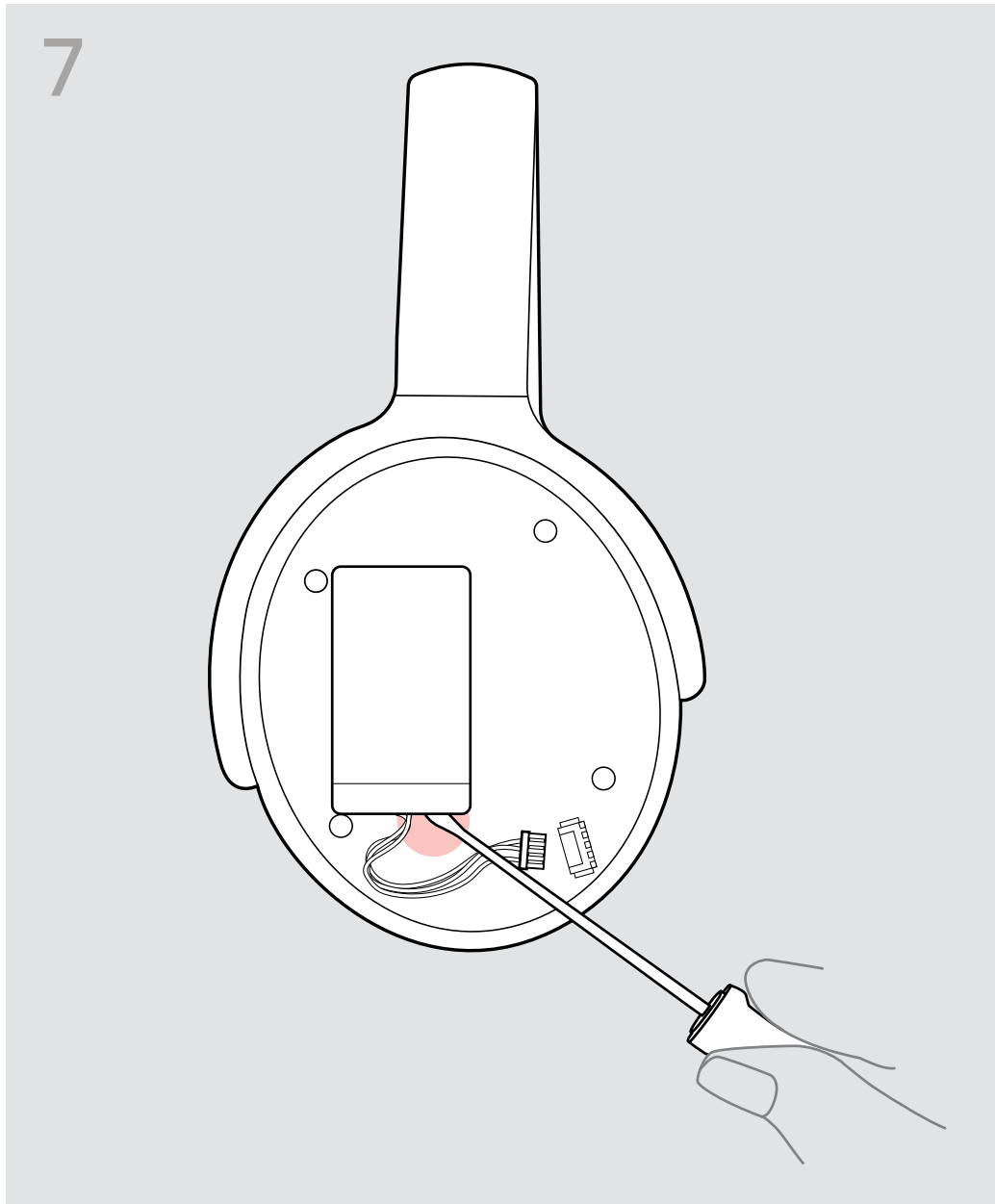
1. Remove the ear pad from the left ear cup (L marking on the headband & no microphone).
2. Remove the 4 screw hole stickers e.g. with a pair of tweezers.
3. Remove the 4 screws with a screwdriver.

Battery Removal Guide



4. Lift the cover on the left-hand side.
5. Remove the glue that fixes the cable e.g. with a pair of tweezers.
6. Unplug the connector of the rechargeable battery.

Battery Removal Guide



7. Carefully slide a small screwdriver under the two battery corners to loosen the rechargeable battery.
8. Remove the rechargeable battery.