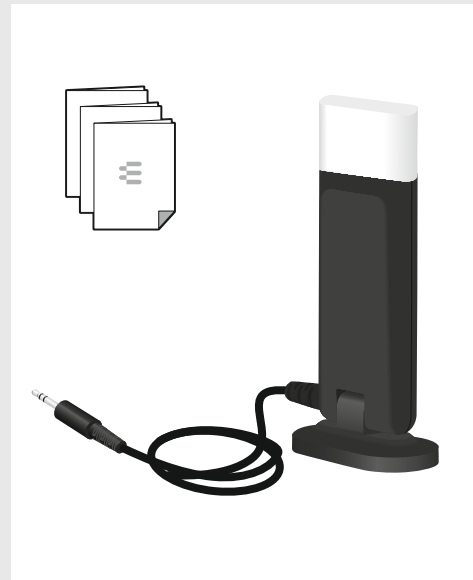


UI 10 BL
Busy light
2.5 mm jack plug

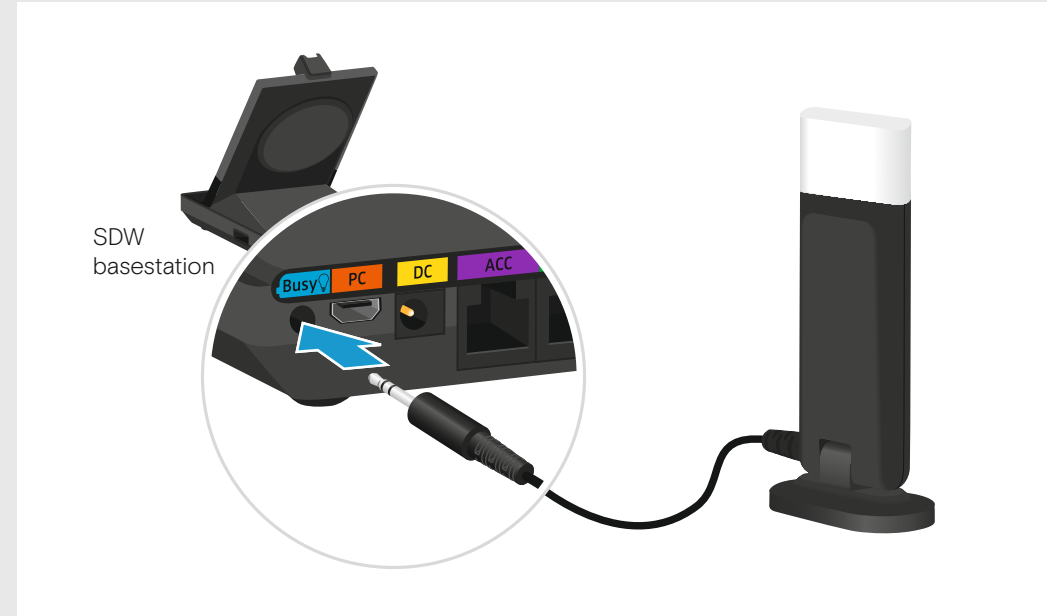


- | | | |
|------------------|---------------------|--------------------------------|
| EN Quick Guide | NL Mini handleiding | PL Skrócona instrukcja obsługi |
| DE Kurzanleitung | EL Γρήγορος οδηγός | RU Краткое руководство |
| FR Guide express | DA Kvikvejledning | TR Hızlı Kılavuz |
| IT Guida rapida | SV Snabbguide | JA クイックガイド |
| ES Guía rápida | FI Pikaopas | ID Panduan Cepat |

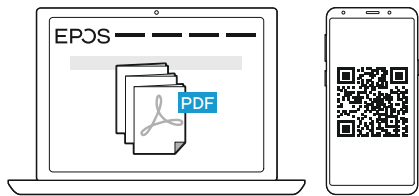
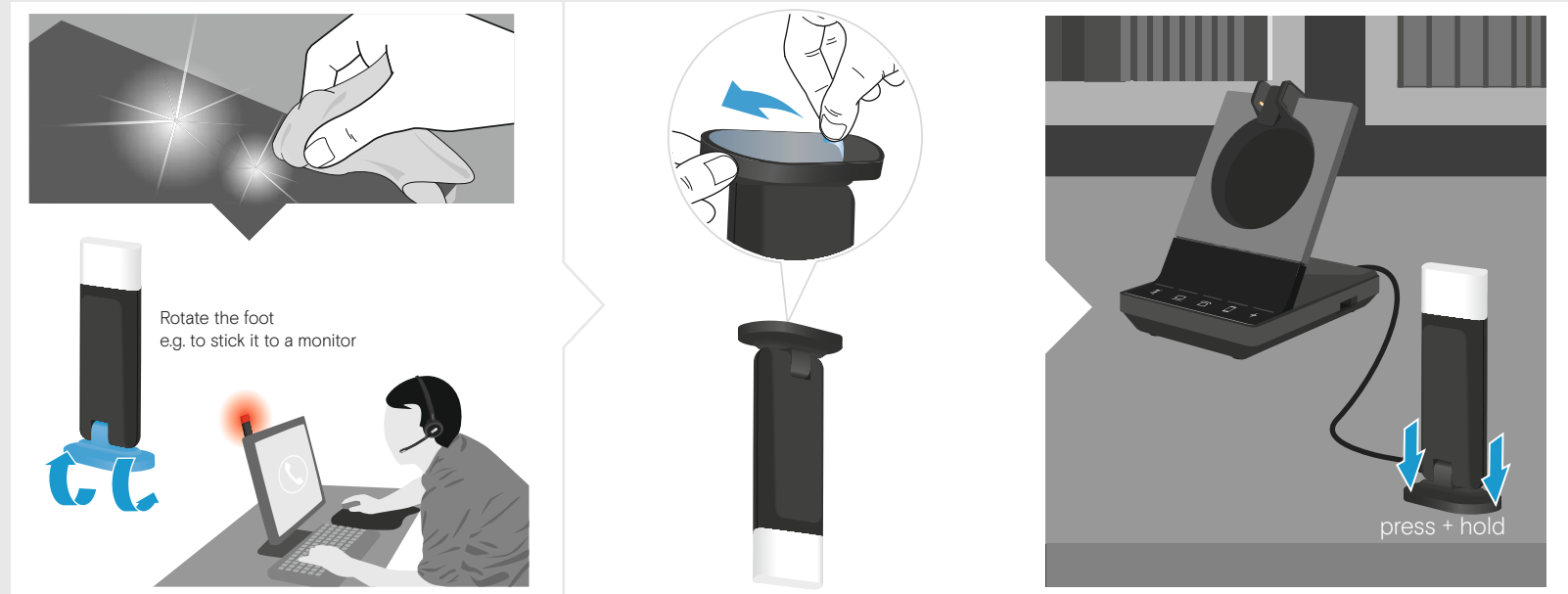
Package contents | Lieferumfang | Contenu de la boîte |
 Contenuti della confezione | Contenido del embalaje | Conteúdo da embalagem | Inhoud verpakking | Περιεχόμενα συσκευασίας |
 Pakkens indhold | Innehåll i förpackningen | Pakkauksen sisältö |
 Zawartość opakowania | Содержимое упаковки |
 Kutunun içeriği | パッケージ内容 | Isi kemasan



Connecting the Busy light | Busy light anschließen | Connecter la Busy light | Connessione alla Busy light |
 Conexión de Busy light | Ligar o Busy light | De Busy light aansluiten | Σύνδεση του Busy light | Ansluta Busy light |
 Busy light in kytkeminen | Podłączenie diody zajętości | Подключение Busy light |
 Meşgul işiğ birimini bağlama | Busy light の接続 | Menghubungkan Busy light

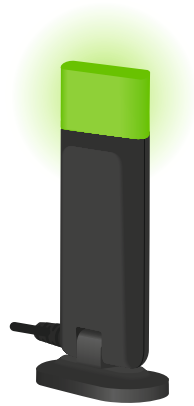


Mounting the Busy light to a desk or computer | Busy light an einem Schreibtisch oder Computer befestigen | Monter la Busy light sur un bureau ou un ordinateur |
 Installazione della Busy light su una scrivania o un computer | Montaje de Busy light en un escritorio u ordenador | Montar o Busy light numa secretária ou computador | De Busy light bevestigen aan een bureau of computer |
 Τοποθέτηση του Busy light σε γραφείο ή υπολογιστή |
 Monteringen af Busy light på et skrivebord eller en computer | Monterar Busy light på ett skrivbord eller en dator | Busy lightin asentaminen työpöydälle tai tietokoneeseen |
 Mocowanie diody zajętości do biurka lub komputera |
 Установка Busy light на столе или компьютере | Meşgul işiğni masaya veya bilgisayara monte etme | デスクまたはコンピュータへの Busy light の取り付け |
 Memasang Busy light pada meja atau komputer

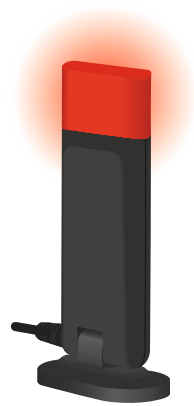


www.eposaudio.com/support

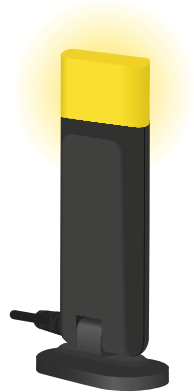
Overview of the LED indications | Übersicht der LED-Anzeigen | Aperçu des indications LED | Panoramica degli indicatori LED | Resumen de los indicadores LED | Vista geral das indicações LED | Overzicht van de indicatielampjes | Επισκόπηση των ενδείξεων LED | Oversigt over indikatorlampens signaler | Översikt av LED-belysningen | LED-merkivalojen yleiskatsaus | Przegląd stanów diody LED | Обзор светодиодных индикаторов | LED göstergelere genel bakış | LED 表示の概要 | Gambaran umum tentang indikasi LED



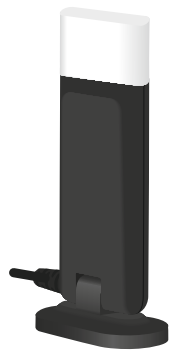
AVAILABLE



BUSY



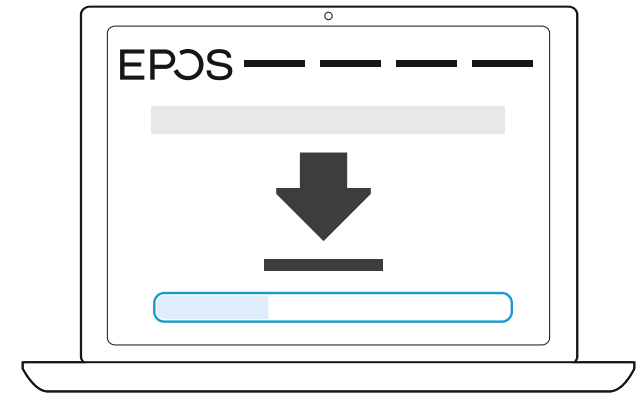
AWAY



Connected device is
switched off

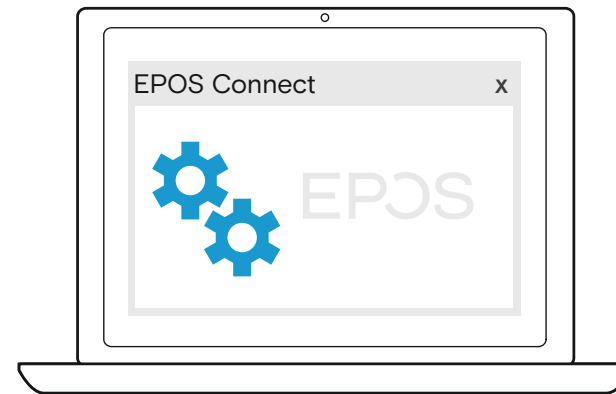
Installing the Busy light | Busy light installieren | Installer le voyant occupé (Busy light) | Installazione della Busy light | Instalación de la luz de aviso Busy light | Instalação da Luz de Ocupado | Installatie van het bezetlampje | Εγκατάσταση του Busy light | Installering af Busy light | Installera Busy light | Merkivalon asennus | Instalowanie lampki zajętości | Установка индикатора занятого состояния | Meşgul lambasının kurulumu | ビジーランプの設置 | Menginstal Busy light

Download and install the free [EPOS Connect](http://www.eposaudio.com/connect) software on your computer.



www.eposaudio.com/connect

Changing settings | Einstellungen ändern | Modification des paramètres | Modifica delle impostazioni | Modificar los ajustes | Alterar definições | Instellingen wijzigen | Αλλαγή ρυθμίσεων | Ændring af indstillinger | Ändra inställningar | Muuta asetuksia | Zmiana ustawień | Изменение настроек | Ayarların değiştirilmesi | 設定の変更 | Mengubah pengaturan



For manual configurations, open [EPOS Connect](http://www.eposaudio.com/connect) settings. You can change for example:

- Colors
- ON/OFF
- soft phone presence synchronization on/off